

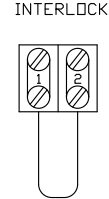
**CIRCUIT DESCRIPTION.**

1. 24VAC CONTROL CIRCUIT.
2. OPEN/CLOSE/STOP COMMANDS.
3. SAFETY REVERSE.
4. PRE-WIRE FOR RADIO-CONTROLS, LOOP DETECTORS, PHOTOCELLS ETC.

**\*1-CONTROL WIRING OPTION ON CLOSE:**

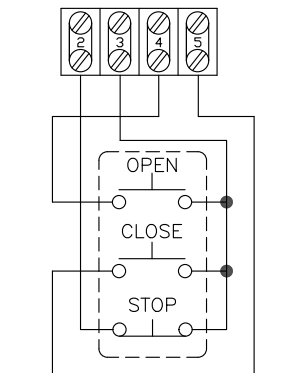
THIS OPERATOR LEAVES THE FACTORY WITH A "C2" WIRING-MEANING THAT CONSTANT PRESSURE IS REQUIRED TO CLOSE THE DOOR. IF MOMENTARY OPERATION ON CLOSE 'B2' IS DESIRED THEN REMOVE THE WHITE WIRE FROM TERMINAL #5 AND PLACE IT ON TERMINAL #3.

**EXTERNAL INTERLOCK**

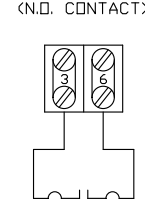


REMOVE FACTORY INSTALLED JUMPER IF EXTERNAL INTERLOCK DEVICE IS REQUIRED. PLACE A NORMALLY CLOSED SET OF WIRES ACROSS THESE TWO TERMINALS.

**SINGLE PUSH-BUTTON STATION**

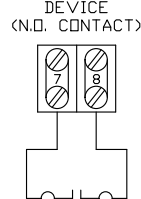


**SAFETY EDGE (N.O. CONTACT)**



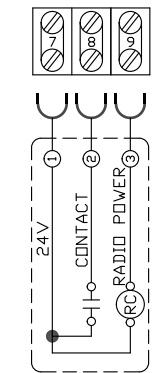
SAFETY REVERSE DEVICE

**OPEN-CLOSE DEVICE (N.O. CONTACT)**

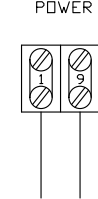


OPEN-CLOSE COMMAND

**RADIO RECEIVER**



**24 VAC POWER**



24 VAC POWER AVAILABLE 10VA MAX.



**TECH. HELP LINE:**  
 CANADA: 1-(877) 888-1116  
 USA: 1-(888) 816-8584

<b>TITLE</b>	1-PHASE WIRING SCHEMATIC		
<b>DWG. NO.</b>	MS100LS-S		
<b>VERIFIED BY</b>	C.S.	<b>DATE</b>	<b>REV</b>
		28.09.09	E
<b>CLIENT</b>			
<b>PROJECT</b>			
<b>MANUFACTURER</b>	MICANAN SYSTEMS INC.		