

FOR 220V  $\Delta$  /  $\Delta$   
 REMOVE BLACK WIRE FROM C6 AND PLACE ON O4  
 JUMPER NOT REQUIRED (PLEASE REMOVE)

NOTE:  
 —MOTOR RELAY(M), TRANSFORMER AND SOLENOID (IF APPLICABLE) MUST BE 220V.  
 —CIRCUIT BREAKER MUST BE APPROPRIATE AMPERAGE.  
 —MOTOR MUST BE WIRED FOR 220V AS SHOWN ABOVE .

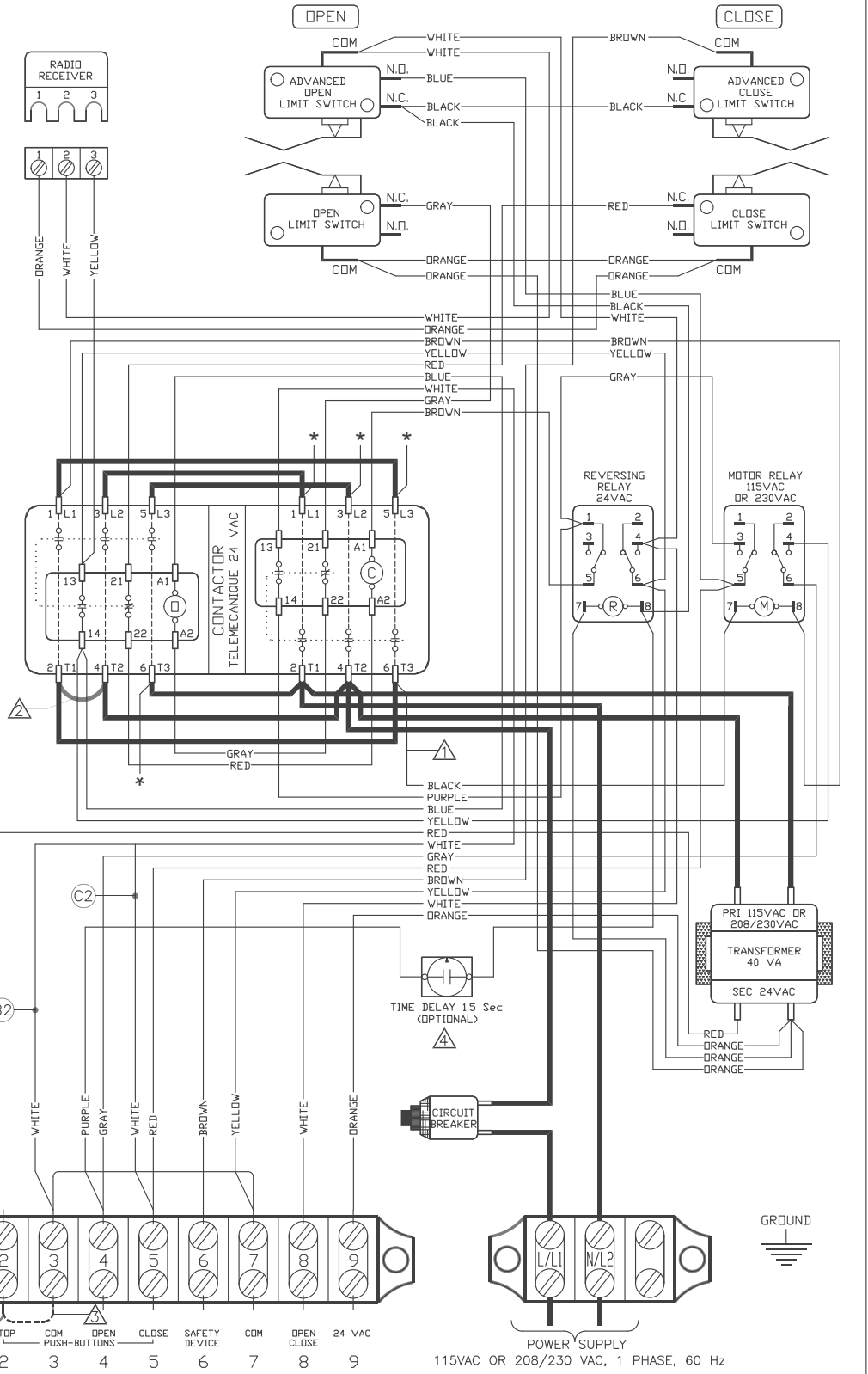
⚠ IF STOP BUTTON NOT USED, ADD JUMPER BETWEEN 2 & 3.

⚠ TIME DELAY UPON REVERSE (OPTIONAL)  
 IF 1.5 SEC TIME-DELAY UPON SAFETY REVERSE IS REQUIRED. REMOVE THE PURPLE WIRE FROM TERMINAL #4, AND CONNECT TO ONE END OF TIME-DELAY AND OTHER END, BACK TO TERMINAL #4.

NOTE: C2/B2  
 CONTROL WIRING OPTION ON CLOSE:  
 C2 THIS OPERATOR LEAVES THE FACTORY WITH A "C2" WIRING — MEANING THAT CONSTANT PRESSURE IS REQUIRED TO CLOSE THE DOOR.  
 B2 IF MOMENTARY OPERATION ON CLOSE ("B2" WIRING) IS DESIRED, THEN REMOVE THE WHITE WIRE FROM TERMINAL #5 AND PLACE IT ON TERMINAL #3.

⚠ WARNING  
 MICANAN STRONGLY RECOMMENDS THE USE OF ENTRAPMENT PROTECTION SYSTEMS WHEN B2 (MOMENTARY CONTACT) WIRING IS USED.

NOTE: MINIMUM 18 AWG WIRE MUST BE USED FOR FIELD CONNECTIONS.



1-Phase Wiring Diagram  
 MS100-WW  
 REV. H | DATE: 22.09.14  
 TECH. HELP LINE:  
 CANADA: 1-(877) 888-1116  
 USA: 1-(888) 816-8584

