

**⚠ TIME DELAY UPON REVERSE. (OPTIONAL)**  
 IF 1.5 SEC TIME-DELAY UPON SAFETY REVERSE IS REQUIRED. REMOVE THE PURPLE AND BLUE WIRES FROM TERMINAL #4, AND CONNECT TO ONE END OF TIME-DELAY AND OTHER END, BACK TO TERMINAL #4.

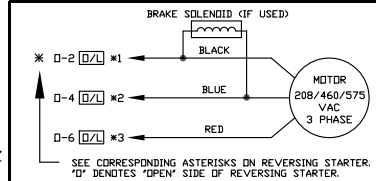
**⚠ IF STOP BUTTON NOT USED, ADD JUMPER BETWEEN 2 & 3.**

**⚠ TIMER TO CLOSE FUNCTION.**  
 AUTOMATIC TIMER TO CLOSE IS ACTIVATED WHEN DOOR IS FULL OPEN. THIS OPERATOR LEAVES THE FACTORY WITH RADIO CONTROL TO OPEN ONLY AND REFRESH TIMER. IF RADIO CONTROL IS REQUIRED TO OPEN AND CLOSE, REMOVE BLUE WIRE FROM TB4 (OR FROM TIME-DELAY (IF USED)) AND PLACE ON TB8.  
 NOTE: FOR SAFETY REASONS, MICANAN DOES NOT RECOMMEND THAT THE RADIO CONTROL CLOSE THE DOOR WHEN A TIMER IS USED.

**⚠ WARNING**  
 MICANAN STRONGLY RECOMMENDS THE USE OF ENTRAPMENT PROTECTION SYSTEMS WHEN B2 (MOMENTARY CONTACT) WIRING IS USED.

**NOTE: ①**  
 TO REVERSE MOTOR DIRECTION INTERCHANGE ANY 2 OF THE 3 INCOMING POWER LINES CONNECTING TO POWER SUPPLY TERMINAL STRIP L1, L2, L3.

**NOTE:** MINIMUM 18 AWG WIRE MUST BE USED FOR FIELD CONNECTIONS.



POWER SUPPLY  
 208/230, 460  
 OR 575 VAC  
 3 PHASE, 60 Hz

3-Phase Timer To Close  
 MS300TC-WW  
 REV. H.DATE: 10.10.13  
 TECH. HELP LINE:  
 CANADA: 1-(877) 888-1116  
 USA: 1-(888) 816-8584

