



SH-CT-50 Control Panel

DMBM - DIN Module for Managing Advanced Systems

The DMBM module is part of the Nice modular system designed to manage advanced systems. It features a BusT4 output, LAN connection, RS232 terminal, and 12 programmable dry contact inputs. It supports building automation systems, allowing the connection of up to 50 motors in the Era Inn Smart series.

DMBD GW - DIN Module for Bidirectional Radio Control

The DMBD GW module functions as a bridge between the modular system and Nice bidirectional radio transmitters, operating at 433.92 MHz. It supports managing all connected outputs with the system, controlling up to 30 radio channels.

DMPBD - DIN Module for Bus Signal and Power Distribution

The DMPBD module is a power distribution unit that distributes the Bus signal and powers all the motor interfaces and connectivity modules within the Nice modular system.



Installation Example

In this control panel system:

- The **DMBM** manages system operations and connects up to 50 motors.
- The **DMBD GW** manages the bidirectional radio control for up to 30 radio channels.
- The **DMPBD** ensures efficient power distribution across all connected modules.

This modular system is designed for flexibility and can be expanded as needed, allowing for integration with various smart building systems.

SH-CT-50

Control Panel



FEATURES DMBM

- Provides power and signal distribution
- Essential for systems using multiple DIN modules
- Offers overload and polarity reversal protection

TECHNICAL SPECIFICATIONS

DMBM

Power Supply	24 VDC
Operating Temp Range	0°C to +60°C
Dimensions (mm)	17.7 x 90 x 46
Weight (g)	40
Space on DIN rail	1 unit
Protection Class	IP20

FEATURES DMBD GW

- Memory for up to 30 radio channels
- Manages all outputs in the system
- Compatible with Bi-Directional RF motors
- Includes an antenna cable to improve reception and avoid interference

DMBD GW

Power Supply	24 VDC
Power (W)	1.44
Absorption	30 mA
Operating Temp Range	0°C to +60°C
Dimensions (mm)	35 x 90 x 46
Weight (g)	66
Space on DIN rail	2 unit
Protection Class	IP20

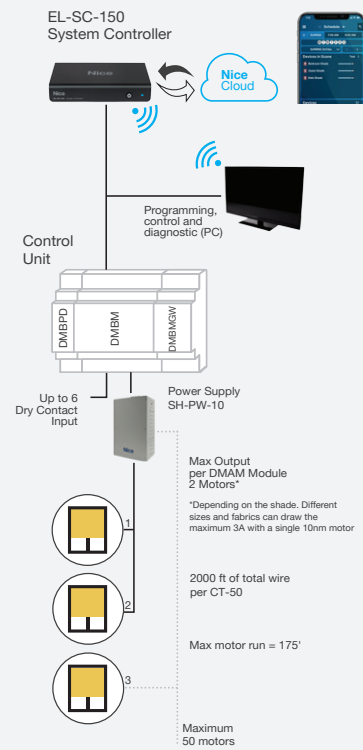
FEATURES DMPBD

- Provides power and signal distribution
- Essential for systems using multiple DIN modules
- Offers overload and polarity reversal protection

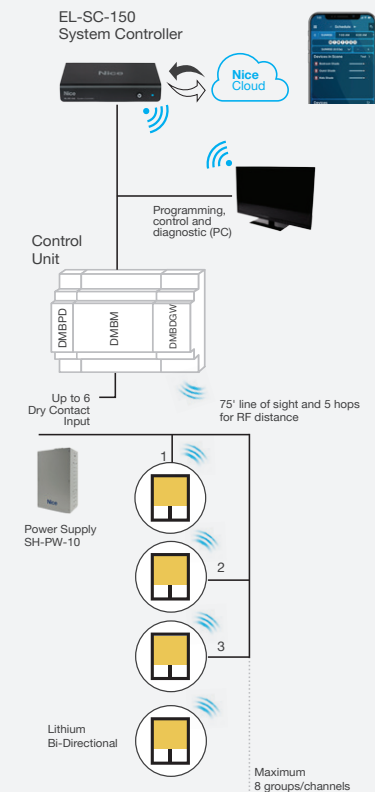
DMPBD

Power Supply	24 VDC
Operating Temp Range	0°C to +60°C
Dimensions (mm)	17.7 x 90 x 46
Weight (g)	40
Space on DIN rail	1 unit
Protection Class	IP20

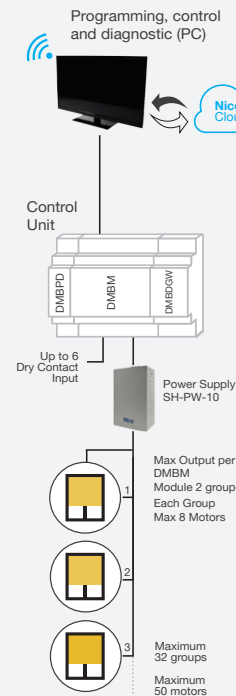
WIRED CONTROL SOLUTION



RADIO CONTROL SOLUTION



DRY CONTROL SOLUTION



When paired, a SH-CT-50 and a SH-PW-10 provide a complete power and control solution for Sun Shades.

Note: Configuration can also support a hybrid solution with both wired and wireless.