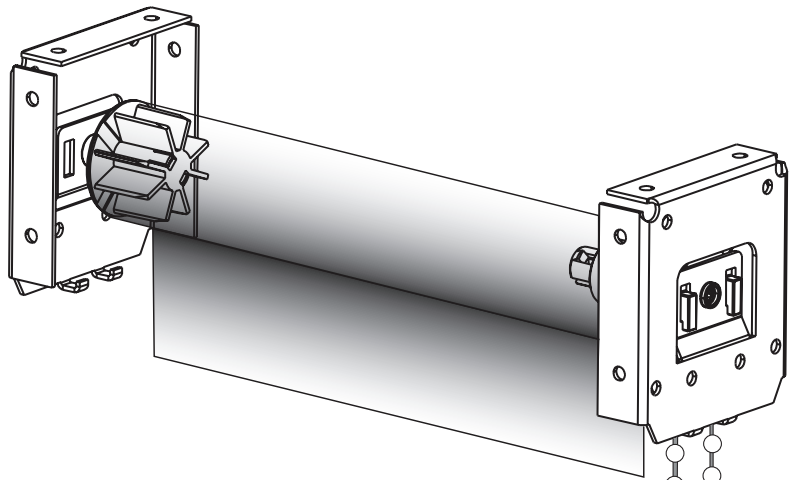


Sun Shade



Fascia

Installation

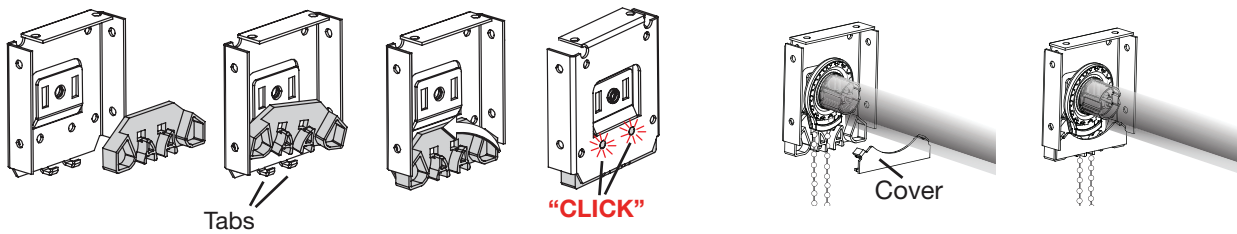
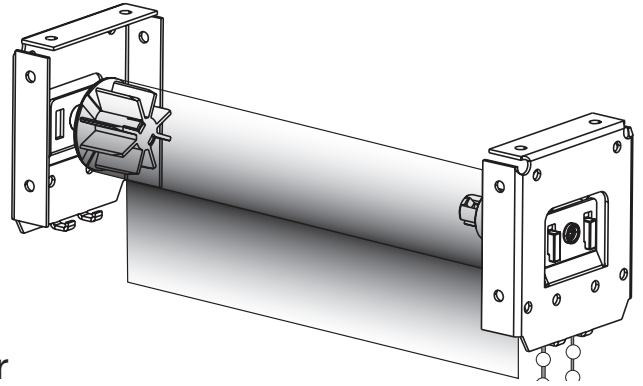
Nice

Fascia Installation

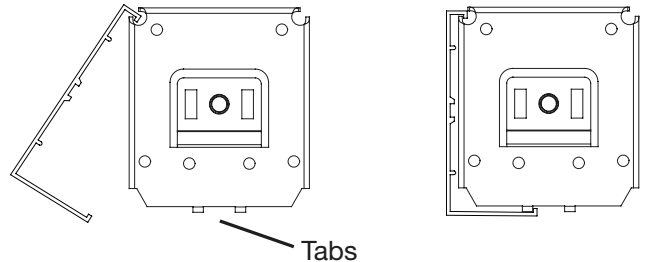
Roller Shades with 3" Fascia

Chain diverters are supplied and required for the 3" fascia.

1. Insert the Chain Diverter into the clutch side mounting bracket only.
2. Hinge the Chain Diverter on the brackets lower tabs, and rotate backward into bracket.
3. Make sure the 2 round pins on the chain diverter click into the 2 round holes on the bracket.



1. Hook the Fascia on the top of the bracket first, and then rotate downward.
2. Press until the bottom hooked feature on the Fascia engages and is locked to the tabs of the bracket.



Roller Shades with 4" Fascia

No Chain Diverters are supplied or required for the 4" Fascia.

1. Hook the Fascia on the top of the bracket first, and then rotate downward.
2. Press until the bottom hooked feature on the Fascia engages and is locked to the tabs of the bracket.

