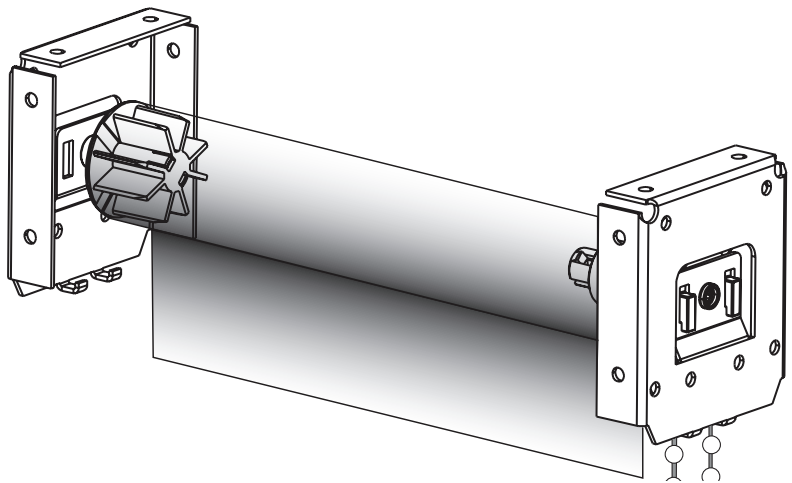


# Sun Shade



## Fascia

Installation

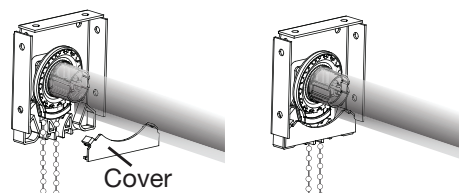
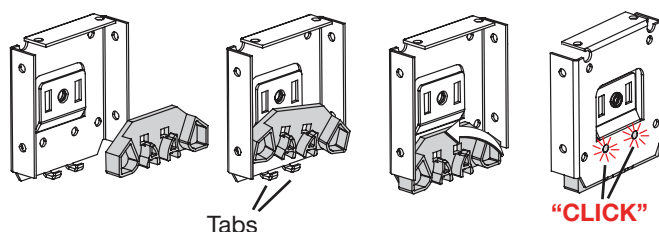
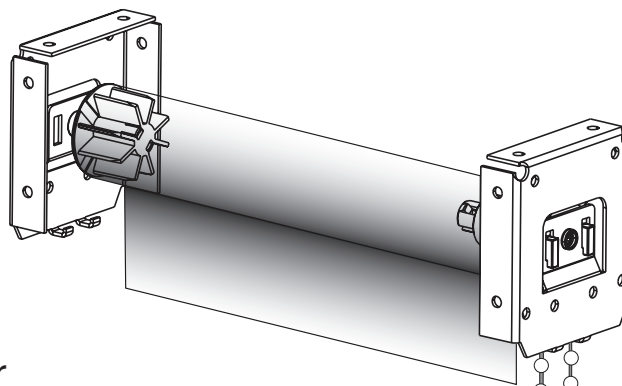
Nice

# Fascia Installation

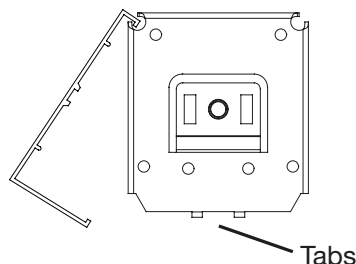
## Roller Shades with 3" Fascia

Chain diverters are supplied and required for the 3" fascia.

1. Insert the Chain Diverter into the clutch side mounting bracket only.
2. Hinge the Chain Diverter on the brackets lower tabs, and rotate backward into bracket.
3. Make sure the 2 round pins on the chain diverter click into the 2 round holes on the bracket.



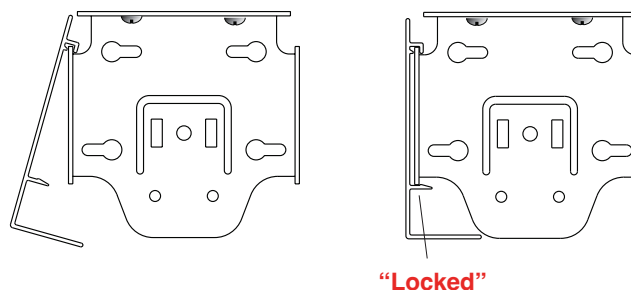
1. Hook the Fascia on the top of the bracket first, and then rotate downward.
2. Press until the bottom hooked feature on the Fascia engages and is locked to the tabs of the bracket.



## Roller Shades with 4" Fascia

No Chain Diverters are supplied or required for the 4" Fascia.

1. Hook the Fascia on the top of the bracket first, and then rotate downward.
2. Press until the bottom hooked feature on the Fascia engages and is locked to the tabs of the bracket.



Nice

Niceforyou.com

©2023 Nice North America LLC.  
All rights reserved.

Technical Support:  
800-421-1587

Technical Support Hours:  
M – F, 6am – 4pm PST

Nice North America  
c/o Customer Service  
5919 Sea Otter Place, Ste. 100  
Carlsbad, CA 92010

10033834 Rev-A