

LOAD SENSING MUST BE ADJUSTED!

THIS MODEL INCORPORATES A LOAD-SENSING FEATURE IN THE OPEN DIRECTION. IF THE GRILLE IS LOCKED OR OBSTRUCTED WHILE ATTEMPTING TO OPEN, THE LOAD-SENSING FEATURE WILL ACTIVATE AND STOP THE GRILLE. YOU THEN MUST INITIATE A CLOSE COMMAND TO RESET THE SYSTEM.

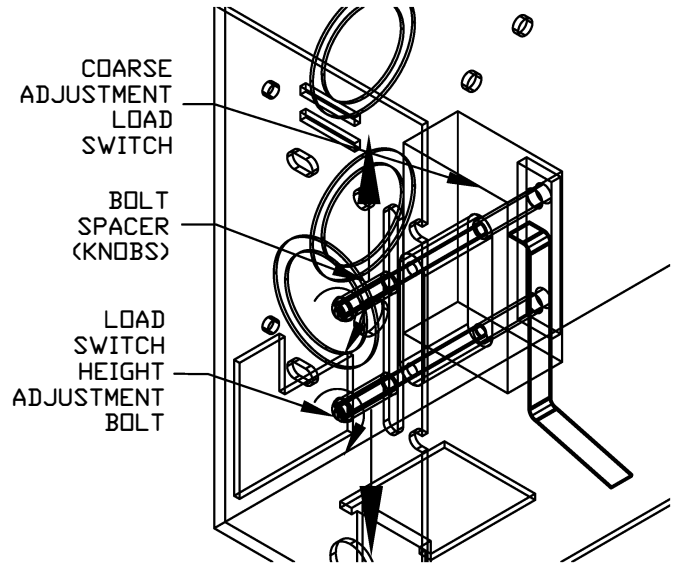
WARNING

ADJUSTMENT CONDITIONS

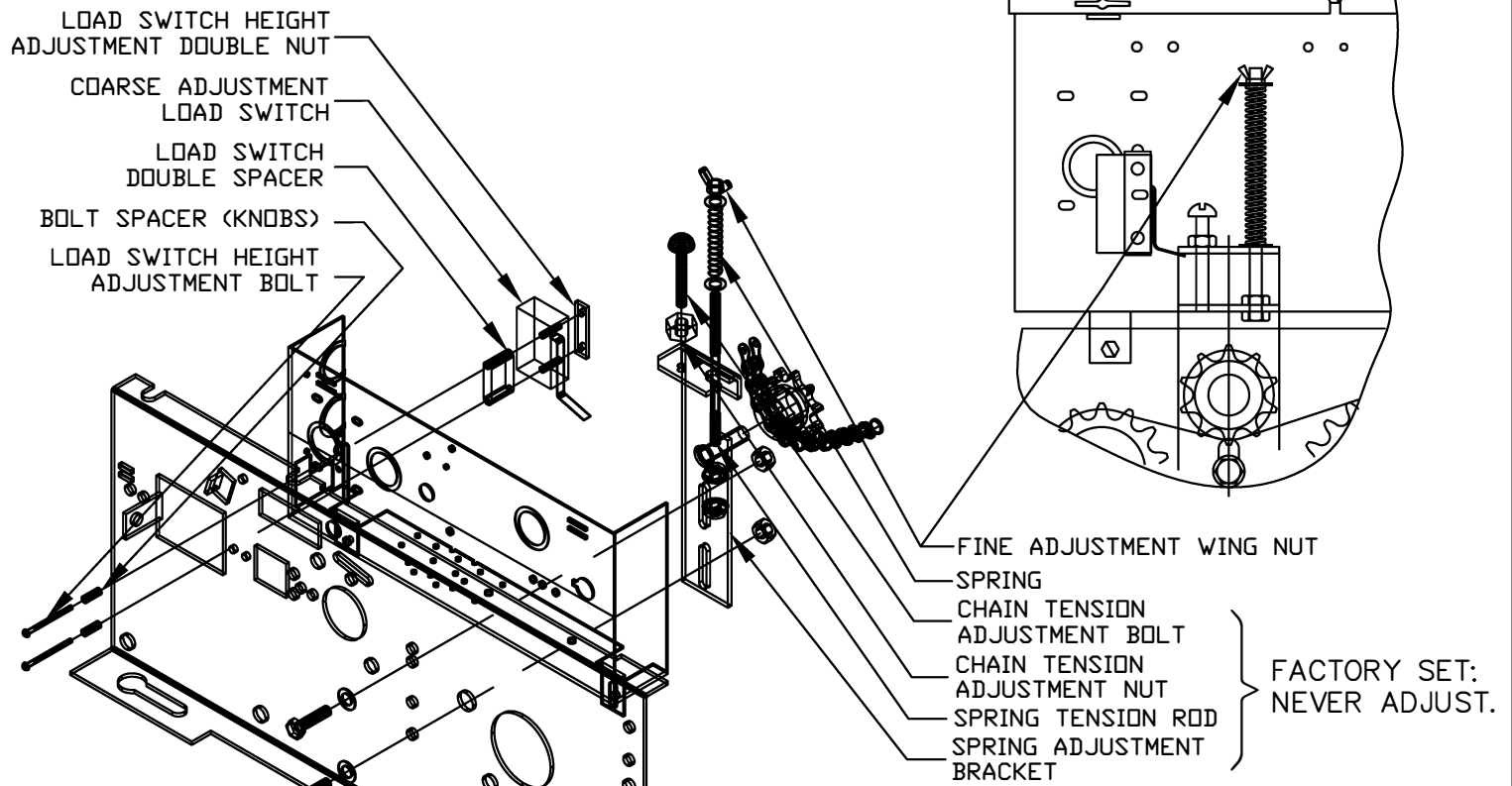
UPON OPEN ACTIVATION, IF THE GRILLE DOES NOT MOVE AND THE CONTROL CIRCUIT ONLY GIVES AN AUDIBLE 'CLICKING SOUND' FROM RELAY, FOLLOW INSTRUCTIONS BELOW:

- A. ROTATE FINE ADJUSTMENT WING NUT SO ONLY 3/4" OF THREAD IS EXPOSED AT TOP OF SPRING TENSION ROD.
- B. SLIGHTLY LOOSEN LOAD SWITCH ADJUSTMENT BOLTS (2) AND SLIDE SWITCH TOWARDS OPENING OF CONTROL BOX, APPLYING PRESSURE ON LOAD LIMIT SWITCH METAL LEVER WHICH IS UNDER SPRING ADJUSTMENT BRACKET.
- C. TIGHTEN LOAD SWITCH ADJUSTMENT BOLTS SO LOAD LIMIT SWITCH METAL LEVER IS TIGHT AGAINST SPRING ADJUSTMENT BRACKET.
- D. TIGHTEN DOWN FINE WING NUT ADJUSTMENT FOR FINAL ADJUSTMENTS, THERE SHOULD BE NO RELAY AUDIBLE 'CLICK'. IF 'CLICKING SOUND' CONTINUES REPEAT ADJUSTMENT.

COARSE ADJUSTMENT



FINE ADJUSTMENT



19.09.12	C.S.	D.J.	NICE GROUP CANADA INC.		
DATE:	APPROVED:	DRAWN BY:	TITLE		
UNLESS OTHERWISE SPECIFIED DIMENSIONS ARE IN INCHES TOLERANCES .XX=±.01 ANGLES=±30°			PRO-EJ/EHJ 2012 LOAD SENSING ADJUSTMENT		
		MATERIAL	WEIGHT	SIZE	
			lb	A	
REVISION: A			CAD FILE: PRO-EJ/EHJ LOAD SENSING ADJUSTMENT	SCALE:	PAGE 1/1